

# sip

# newsletter

## society for invertebrate pathology

Volume 21, Number 1  
March 1989

XXII Annual Meeting  
Society for Invertebrate Pathology  
University of Maryland  
August 20-24, 1989

The annual meeting of the Society for Invertebrate Pathology will be held at the Center of Adult Education on the campus of the University of Maryland at College Park, Maryland. The organizing committee has put together a program which they think will be of interest to all members of the society. Some new features include a session on biological assays and workshops on neoplasias, and protein and nucleic acid separation. In addition to attending the symposia and other presentations, one should take advantage, while in the Washington, D.C. area, of the many aspects of our past history and present government in this part of the U.S.A. and plan to spend some extra time visiting museums, monuments and various government agencies. (You might make an appointment to have a person-to-person interview at your favorite granting institution.)



The Center of Adult Education, University of Maryland, College Park, MD. Site of the 1989 Annual Meeting of the Society for Invertebrate Pathology.

The information below has been presented to help you plan your activities during the next SIP meeting at College Park, Maryland. Special questions may be directed to the following persons: About the program: Dr. Edward M. Dougherty, Insect Pathology Laboratory, Room 214, Building 011A, BARC-W, Beltsville, Maryland 20705 (301) 344-3692. Other questions, Dr. James L. Vaughn, Insect Pathology Laboratory, Room 214, Building 011A, BARC-W, Beltsville, Maryland 20705, (301) 344-3689; or Dr. Charles F. Reichelderfer, Department of Entomology, University of Maryland, College Park, Maryland 20742, (301) 454-7138.

### CALL FOR PAPERS AND ABSTRACTS

Deadline: April 28, 1989

Papers for the Contributed Paper Sessions and Poster Sessions for the SIP Meeting are now being solicited. Those who intend to present papers are urged to prepare their presentations carefully so that they do not exceed the 12 minutes allotted per paper. Three minutes will be allowed for discussion following each paper. Projection facilities for standard 2" x 2" (5.1 x 5.1 cm) slides will be available for the Contributed Paper Sessions. Speakers requiring special projection equipment should notify E. Dougherty at the time the abstracts are submitted. For posters, the boards will be approximately 4' x 8' (1.2 x 2 meters). Please plan to be at your poster for at least one hour.

A blank guide for preparing abstracts is enclosed with this issue of the newsletter. Instructions are printed on the reverse; please follow them carefully. The abstract will be prepared by direct reproduction of the material submitted. Thus, every error which appears in the submitted abstract will also appear in the printed Abstracts. Poorly typed and improperly prepared abstracts will not be printed.

Abstracts must be received at Beltsville, Maryland by April 28, 1989.

### TRANSPORTATION

**Car:** The campus of the University of Maryland at College Park is located 2 mi south of the "Beltway" (Interstate 95) on Rt. 1 (Baltimore Blvd.) -- where many of the motels are also located. The conference will be held at the Center of Adult Education (CAE). To reach the CAE from the Beltway, use Exit 25B (College Park) and take Rt. 1 south for 1.0 mi; turn right onto Rt. 193 West (University Blvd.) and proceed 1.9 mi.; make a left onto Adelphi Rd., an immediate left onto Campus Dr., and follow signs for the CAE, turn immediately left into the CAE parking lot (University College).

**Parking:** Visitor parking permits can be obtained at the registration desk.

**Air:** We highly recommend that conferees arriving by air fly into the Baltimore-Washington International (BWI) Airport. This airport has a shuttle, the "Airport Connection" (301-441-2345), that runs every hour (daily, 6 a.m. to midnight, except Sat. to 8:30 p.m.) and, after an easy changeover at the Greenbelt Station, will deliver passengers directly to their motel or the CAE. The fee is approximately \$15.00. Taxis from the airports to College Park cost about \$25-\$30 (BWI), \$18-\$25 (National), and \$40-\$45 (Dulles). Arrivals at National or Dulles Airports can also use Metrorail (operates 5:30 a.m. to midnight daily, except 8 a.m. to midnight on Sat. and 10 a.m. to midnight on Sun.) and a taxi: the "Washington Flyer" (703-685-1400) has a shuttle bus that links Dulles and the West Falls Church Metrorail Station (orange line); National is on the blue Metrorail line. Ultimately, passengers using Metrorail should go to the Silver Spring Station (red line) and take a

taxi. Warning: this latter strategy could take several hours. Metro (rail and bus) information is 301-637-7000 (6 a.m. to 11:30 p.m.).

Train: Those taking the train should go to the New Carrollton Train Station and take a taxi from there.

Conference Transportation: The R2 bus line runs every 1/2 (rush) to one hour (nonrush) between designated motels on Rt. 1 and the CAE and Brookland Metrorail Station (for forays into Washington, D.C.). Chartered buses will be provided for special conference events.



The National Agricultural Library, U.S.D.A.,  
Agricultural Research Center, Beltsville, MD.

---

#### SIP Newsletter

The SIP Newsletter is produced four times a year by the Society for Invertebrate Pathology. Annual dues (U.S. funds) in the Society are: regular members, \$15.00; and students, \$6.00. Members receive the SIP Newsletter and a copy of the abstracts of all SIP Annual General meetings free, whether or not they attend. Application forms for membership in the Society may be obtained from the Treasurer, Mr. Fredrick G. Kern, Cooperative Oxford Biological Laboratory, 18 South Morris Street, Oxford, Maryland 21654, U.S.A.

#### Council Officers of the Society are:

President ..... Donald W. Roberts, USA  
Vice President ..... Elizabeth W. Davidson, USA  
Past President ..... John C. Harshbarger, USA  
Secretary ..... Robert C. Anderson, USA  
Treasurer ..... Fredrick C. Kern, USA  
Trustees ..... Christopher J. Bayne, USA.  
Peter Faulkner, Canada  
Christopher C. Payne,  
England  
Dudley E. Pinnock,  
Australia

Send news items and other contributions to:  
David Tyrrell, Editor  
SIP Newsletter  
Forestry Canada  
Forest Pest Management Institute  
P.O. Box 490  
Sault Ste. Marie, Ontario, Canada P6A 5M7

DEADLINE NEXT ISSUE: April 30, 1989

#### REGISTRATION

To register in advance for the meeting, please complete and return the enclosed registration form (with check in U.S. dollars payable to Society for Invertebrate Pathology, XXII Annual Meeting) by June 30, 1989. Early registration is encouraged to aid in the meeting organization. Those registering after June 30 will be charged a \$25 late fee. Companion registration fee includes access to the Mixer (Sunday night), the Banquet (Tuesday night), and the Barbecue (Wednesday night). Member and nonmember registration includes these events plus access to all scientific sessions.

#### REFUND POLICY

The society will refund advance registration fees (less a \$5.00 handling fee) for all cancellations received in writing or by telegram on or prior to Monday, August 7, 1989. No refunds will be given after this date.

#### ACCOMMODATIONS AND BOARD

Participants and their family members will be housed in guest rooms in the Center of Adult Education at the University of Maryland campus. The rooms are furnished with two twin beds (\$57.50 singles, \$75.00 doubles plus 5% sales tax) or one queen size bed (\$61.00 singles, \$77.00 doubles plus 5% sales tax), have individually controlled air conditioning, private bath, radio/color television, telephone and wall-to-wall carpeting.

Cafeteria service at the Mount Clare Room is available from 7:00 a.m.-7:00 p.m. Monday-Friday; 8:00 a.m.-4:30 p.m. Saturday; and 8:30 a.m.-2:00 p.m. Sunday. The Garden Restaurant has meals from 11:30 a.m.-2:00 p.m., Monday-Friday. Both of these food facilities are located in the Center of Adult Education and meals are a pay as you use arrangement.

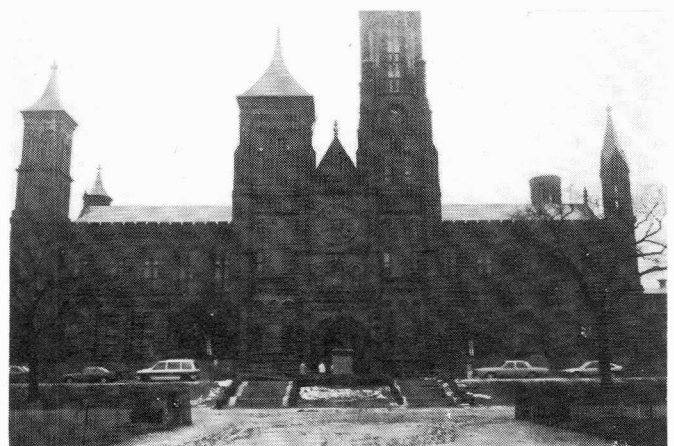
Please keep in mind that the fees for the mixer, barbecue, and banquet are included in the registration fee. To make your room arrangements, please call (301) 985-7303.

#### OFF-CAMPUS HOUSING

Off-campus housing is available at several hotels near College Park and a separate list is included.

#### WEATHER AND DRESS

During August the weather in Maryland is hot and humid. Daytime temperatures may range from 75 to 95°F. It will also be very warm in the evenings. Light summer, casual dress is in order, but some of the better restaurants in the Washington, D.C. area require a jacket and tie for the men. Bring at least one light sweater and your umbrella.



"The Castle," The Smithsonian Institution, Washington, D.C.

#### CHILD CARE

At the time of this newsletter, no child care or babysitting services are available in the area immediately surrounding the College Park campus. Further attempts will be made, however, to locate individuals who are willing to babysit before the 1989 meeting takes place.

#### ROAD RACE

A 5-km race will be run around the University of Maryland golf course, August 23, 1989 at 4:00 p.m. Those wishing to enter the race should complete and return the enclosed race registration form as soon as possible, but no later than June 30, 1989.

#### SOCIAL ACTIVITIES

This year's social activities will include a Mixer (Sunday night), a Banquet (Tuesday night) and a Barbecue (Wednesday night). The registration packet will include a list of theaters, churches, nightclubs, restaurants and other items of interest for additional social activity.

#### ATHLETIC FACILITIES

Recreation cards are available (\$4.00/wk per person) which entitle participants to use the swimming pool, tennis courts, squash courts, racquet ball courts, weight room, track, volleyball and basketball courts, and aerobics center. Cards can be purchased with presentation of registration card to the SIP meeting.

#### EMERGENCY INFORMATION

In case of any emergency situation, one should contact the campus police by dialing 454-3333 or 454-3335. Those dialing from phones on campus need only dial 3333 or 3335.

#### TOURS AND TOURIST INFORMATION

A large number and variety of tours are available in the Metropolitan Washington, D.C. area. Some of the major attractions include tours of the Capitol and the White House and visits to the museums of Natural History, Science and Technology, and Modern Art. The exhibit with the largest number of visitors per year, however, is the Air and Space Museum. Remember, if you want a personal tour of the House and Senate and a visit with your Senator and/or Congressman, you should make arrangements well in advance of your arrival for the SIP meeting. Tickets may be purchased for shuttle bus travel around the downtown-Capitol area as you visit various museums, monuments and government office buildings. Other areas of interest include the inner harbor and the shops of Harbor Place in Baltimore (30 min by car) with a visit to the National Aquarium or Fort McHenry. The more adventurous may prefer an afternoon of sailing on Chesapeake Bay or a visit to the Naval Academy in historic Annapolis. Tickets to the Kennedy Center for the Performing Arts and/or playhouses and dinner theaters may be purchased at the ticket office in the Stamp Student Union on campus. For the more science minded, a tour on Wednesday afternoon will be arranged for those who wish to visit the Beltsville Agricultural Research Center and the National Agricultural Library.

Those who wish to stay a second weekend should make arrangements with the Center of Adult Education before you arrive for the SIP meeting.

#### OFF CAMPUS HOUSING

The following is a list of hotels in close proximity to the University of Maryland. Please call to make arrangements. Unfortunately the University of Maryland Dormitories will be closed during the time of the SIP meeting to prepare for incoming students the following week.

HOLIDAY INN -- Capital Beltway, 10000 Baltimore Blvd., College Park, MD 20740 (301) 345-6700  
Buses pass by between here and the University of Maryland. Restaurant facilities, indoor swimming pool, exercise room, sauna available. \$59 Single, \$59 double plus 10% sales tax.

HOLIDAY INN -- 7200 Hanover Drive, Greenbelt, MD (301) 982-7000.

Restaurant facilities, swimming pool.  
\$59 Single, \$59 double plus 10% sales tax.

QUALITY INN -- 7200 Baltimore Ave., College Park, MD (301) 864-5820. Restaurant facilities, swimming pool.  
\$48 Single, \$54 double, \$7 for each extra, plus 10% sales tax.

COMFORT INN -- 9020 Baltimore Blvd., College Park, MD 20740 (301) 441-8100  
Restaurants nearby. Bus transportation available.  
\$45 Single, \$50 double, plus 10% sales tax.

BEST WESTERN ROYAL PINE MOTEL -- 9113 Baltimore Blvd., College Park, MD 20740 (301) 345-4900  
Restaurants nearby. Bus transportation available.  
\$43.24 Single, \$52.20 double, plus 10% sales tax.

BEST WESTERN MARYLAND INN -- 8601 Baltimore Blvd., College Park, MD 20740 (301) 474-2800  
Restaurant and swimming pool. Bus transportation available.  
\$53.10 Single, \$57.60 double, plus 10% sales tax.

DAYS INN -- UNIVERSITY HOST HOTEL -- 9137 Baltimore Blvd., College Park, MD 20740 (301) 345-5000  
Restaurant and swimming pool. Bus transportation available.  
\$45 Single, \$50 double, plus 10% sales tax.

For those wishing to play golf, the University of Maryland Golf Course is available for play at \$14.00 daily and \$17.00 on weekends. Reservations may be placed at (301) 454-2131. Tennis courts are located in several areas around the campus.

---  
Further note on the NEOPLASIA Workshop.

The Registry of Tumors in Lower Animals (RTLA), Smithsonian Institution, Washington, D.C., is organizing a contributed paper session and workshop on invertebrate neoplasms at the Society for Invertebrate Pathology meeting this summer.

The contributed paper session will be on Monday, August 21, from 1400 to 1600 hours. Papers on any topic of invertebrate neoplasia, including new reports of neoplasms or related disorders and research on the etiology of such lesions, will be considered for presentation. Authors should prepare and submit abstracts to the SIP organizing committee by the announced deadline. This session will be chaired by Dr. John C. Harshbarger, RTLA Director.

A workshop on invertebrate neoplasms will immediately follow the contributed paper session on Monday (1630-1800), and continue during the day on Tuesday. It will be directed by Dr. Esther C. Peters, Research Fellow. This workshop will be open to all interested invertebrate pathologists and will focus on the invertebrate neoplasm cases archived in the RTLA which are being reviewed for the preparation of an atlas, as well as provide an opportunity to discuss new cases brought by participants. Microscopes will be available to examine this material. If you wish to participate, please contact either Dr. Peters or Dr. Harshbarger by July 15 (so they can determine the size of the room and number of microscopes needed). The address is: Registry of Tumors in Lower Animals, National Museum of Natural History, Smithsonian Institution, Washington, D.C. 20560, (202) 357-2647.

---  
From the Treasurer

I know that many of you have expressed concern having not received your 1989 dues notices. The change over of the SIP Reflex data base from Bob Granados's system to our system did not go smoothly. We have had to update our

our system did not go smoothly. We have had to update our computer system, adding an additional memory board to operate the Reflex program. Other modification to the programs were required to make the system and the programs fully compatible. I think I've reached the light at the end of the tunnel and you should have or soon be receiving your dues notices.

#### Journal Subscriptions

This 1989 subscription price information was provided by Academic Press, Inc. for the Journal of Invertebrate Pathology. They will continue to give SIP members a price break.

	Subscribers in the USA and Canada	Subscribers in All Other Countries
Institutional	\$238.00	\$294.00
Personal	\$119.00	\$155.00
Member	\$100.00	\$100.00
Student	--	--

All Prices include postage, handling, and air freight, where applicable.

All personal subscriptions must be paid with a personal check or a money order DRAWN ON A U.S. BANK  
Corporate and institutional checks will NOT be accepted.

Please direct all orders, payments and correspondence to :

Mrs. Elinor Berner  
Journal Division  
Academic Press, Inc.  
1250 Sixth Avenue  
San Diego, Ca. 92101

Fred Kern

From the Editor

Several people have written to me concerned that they did not receive a Newsletter during the latter half of 1988. There were a number of reasons which together resulted in the late delivery of the last Newsletter of 1988, which should have reached all members by late February 1989. Because I had very little material on hand up to the end of September I decided to follow the same practice as in the past two years and put out a single issue comprising numbers 3 and 4 of Volume 21 of the Newsletter. At the same time I knew Fred Kern was having problems in transferring the computer records to his system, and it is from these records that the mailing labels are prepared. By delaying the printing of the Newsletter till early January I was able to include a number of late items, including the brochures for the 1990 Australian meeting, and still ended up with the Newsletter sitting in my lab for 10 days waiting for their labels. As soon as these arrived I made arrangements for American and foreign Newsletters to be mailed from Sault Ste. Marie, Michigan, which hopefully resulted in quicker delivery times.

A number of points arise from the above. Firstly, the Newsletter is the primary means of dissemination of items of news and information of interest to society members. However, this material is generated by the membership, and I cannot publish a newsletter without cooperation of the members in submitting suitable news, articles, letters, opinions, etc. for inclusion. Certain members have been very active in this regard, and I thank them for their cooperation. Other material I can solicit directly from various contributors, with varying degrees of success, but with a little more effort on the part of more members we could make the Newsletter a much more valuable contribution to the Society.

(Printed in Canada)

Secondly the Newsletter mailing labels are prepared by the Treasurer: please in the first instance send change of address information to him. It is from his list that I get my information to decide the size of the print run and numbers to order in each of the two types of envelope used for mailing. If the information is sent only to me, I cannot guarantee to make changes in subsequent mailings, since the old address will continue to turn up on the labels.

Thirdly, as I have stated above, the Newsletters contain much information about Society events. Therefore I recommend that back issues be kept accessible in case a particular issue is late or not delivered. Thus, perusal of back issues will reveal, for instance, that the upcoming 1989 annual meeting is to be held in College Park Maryland (19(3) Dec 1987). Requests for information about forthcoming meetings should be addressed to the Chairman of the Local Arrangements Committee (for 1988-90 they were listed in issue 20(1)). Perusal of back issues will also reveal, for instance, that requests for abstracts of papers always appear in the first issue of the year and that these are due into the hands of the Local Arrangements Committee sometime in April. Thus if a particular February issue should be late, members intending to submit papers at the upcoming meeting should nevertheless prepare their material in anticipation.

The foregoing is of course no excuse for late delivery of any issue, and I can assure you that every effort will be made to ensure prompt preparation and delivery of Newsletters.

David Tyrrell

#### Financial Statement of SIP for the period 30 September, 1988 - 31 January, 1989

From R. Granados	SIP Fund	\$ 27095.68
	ENDOWMENT FUND	\$ 3746.66
	PETTY CASH	\$ 24.07
<b>BALANCE ON HAND 30 SEPTEMBER 1988</b>		<b>\$ 30,866.41</b>
<b>INCOME</b>		
Membership Dues		\$ 354.00
Regular	\$ 330.00	
Student	\$ 24.00	
Sustaining	\$ 0.00	
Division of Microsporidia		\$ 6.00
Division of Microbial Control		\$ 16.00
Journal of Invertebrate Pathology Subscriptions		\$ 478.00
US	\$ 285.00	
Foreign	\$ 193.00	
Interest		\$ 562.95
Regular	\$ 503.83	
Endowment Fund	\$ 59.12	
Contributions		\$ 314.50
Endowment Fund	\$ 0.00	
Regular	\$ 314.50	
Totals Income	\$1731.45	
		\$ 32,597.86
<b>Disbursements</b>		
Treasurer Office Expences		\$ 22.85
Sip Check Book	\$ 22.85	
Computerization		\$ 547.50
Memory board up Grade	\$ 547.50	
		(\$ 570.35)
Balance on Hand 31 January 1989		\$ 32027.51
Second National Federal Savings Bank		
Savings/Checking Account		\$ 28,200.12
Endowment Fund Savings Account		\$ 3,803.32
Petty Cash		\$ 24.07



**SOCIETY FOR INVERTEBRATE PATHOLOGY**

**XXII ANNUAL MEETING REGISTRATION  
UNIVERSITY OF MARYLAND, COLLEGE PARK**

**August 20-24, 1989**

Please print or type

Name \_\_\_\_\_

Address \_\_\_\_\_

City \_\_\_\_\_ State \_\_\_\_\_ Zip \_\_\_\_\_

Country \_\_\_\_\_

Phone Number (\_\_\_\_) \_\_\_\_\_

**Registration Fee - If paid by June 30, 1989**

**(Check appropriate boxes)**

- Regular Members - \$75.00 \_\_\_\_\_
- Student Members - \$50.00 \_\_\_\_\_
- Non-members - \$100.00 \_\_\_\_\_
- Companions - \$50.00 \_\_\_\_\_
- Late Fee (after June 30, 1989) \$25.00 \_\_\_\_\_

**Total Amount Enclosed \$ \_\_\_\_\_**

**Make Checks payable (in U.S. dollars) to:  
Society for Invertebrate Pathology, XXII Annual Meeting**

**Registration fee includes: Mixer (Sunday), Banquet (Tuesday) and Barbeque (Wednesday).**

**Housing Information**

Hotel accommodations must be made directly with the hotel.  
A registration form is enclosed in the newsletter for the  
University of Maryland Adult Education Center (meeting site)  
Rates are \$57.50 (single) and \$75.00 (double) plus 5% sales  
tax. Alternate local hotels are listed on the enclosed  
information sheet.

**Return this form (with full payment) to:**

**Dwight E. Lynn  
USDA/ARS, Insect Pathology Lab  
BARC-West, Bldg. 011A, Rm. 214  
Beltsville, MD 20705  
USA**

Society for Invertebrate Pathology Hotel Reservation Form  
University of Maryland Center of Adult Education

Name(s) \_\_\_\_\_

Address \_\_\_\_\_

City \_\_\_\_\_ State \_\_\_\_\_ Zip \_\_\_\_\_

Country \_\_\_\_\_

Phone ( ) \_\_\_\_\_

Arrival \_\_\_\_\_ (Check in 2:00 PM)  
*Day Date Time*

Departure \_\_\_\_\_ (Check out 1:00 PM)  
*Day Date Time*

*Please Circle Room type below*

**SINGLES**

Twin Bed \$57.50

Queen Bed \$61.00

**DOUBLES**

Twin Bed \$75.00

Queen Bed \$77.00

**SUITES: \$126.50 and up**

If arriving after 6:00 PM, to **GUARANTEE** your reservation  
send one nights **DEPOSIT** or complete credit card information

Method of payment:  cash/check  
 VISA  Master Card

Card Number | \_ \_ \_ \_ \_ |

Expiration Date | \_ \_ \_ \_ \_ |

Signature \_\_\_\_\_

*Return completed form to:*

University of Maryland  
Center of Adult Education, Reservations  
University Boulevard at Adelphi Road  
College Park, Maryland 20742  
U.S.A.

*or phone:*  
(301)985-7303

## INSTRUCTIONS TO AUTHORS

The Abstracts of the Annual Meeting of the Society for Invertebrate Pathology will be prepared by direct reproduction of the abstract submitted by each author. There will be no editing of the author's copy. Thus, every error which appears in the submitted abstract will also appear in the printed Abstracts. Please use the following procedure for the preparation of the abstract. If intended as a Poster presentation, please type "POSTER SESSION" at the bottom middle of the Abstract. In addition, for a Poster presentation, please bring 50 copies of your Abstract for distribution at the session.

If you are a student and wish your paper to be entered in the "BEST PAPER BY A STUDENT" contest (\$200.00 prize), please indicate this in a separate letter to accompany the abstract and type "STUDENT PAPER" at the bottom middle of the abstract. To be eligible for the prize, the paper must be presented by the student. The student need not be sole author, but must be senior author.

1. Use a typewriter, preferably electric with a carbon ribbon. If such a typewriter is unavailable, use a typewriter with as new a ribbon as possible.
2. Place the enclosed abstract template under a blank typing sheet and insert in the typewriter. The dark lines will show through the usual grades of typing paper.
3. Single space all typing. The title, authorship and text must be within the boxes as outlined on the template. Leave no top or left margin within the boxes. Type only within the space outlined in the template.
4. The Style Manual for Biological Journals, published by the American Institute of Biological Sciences, should be used as a guide to abbreviations and symbols. Proprietary and trade names must be accompanied, at first mention, by the established or generic names. When using abbreviations for compounds, the name must be spelled out in full at the first mention.
5. **REMEMBER!** Your abstract will be printed exactly as submitted. Any smudges, errors and misspellings on your copy will also be evident in the printed Abstracts.
6. Poorly typed and improperly prepared abstracts, unsuitable for direct reproduction, will not be printed. Because of the various deadlines there will be no time for returning the abstracts to authors for retyping. Therefore, please follow the instructions closely.
7. Send your abstract so as to reach the following address no later than April 28, 1989:

Dr. Edward M. Dougherty  
Insect Pathology Laboratory  
Room 214, Building 011A, BARC-W  
Beltsville, Maryland 20705 USA

8. Enclose a self-addressed envelope with your abstract if you wish acknowledgment of the receipt of the abstract.

SEVENTH ANNUAL SIP 5K SCENIC/CHALLENGING/TERRIFYING

DASH-FOR-GLORY RACE

August 23, 1989

Wednesday at 4:00pm

University of Maryland Golf Course

\$7.00 Entry fee includes a souvenir T-shirt (guaranteed unique). Please enclose fee with completed entry form and mail to address at bottom of sheet.

Name \_\_\_\_\_

Address \_\_\_\_\_

\_\_\_\_\_

\_\_\_\_\_

Category Male Female \_\_\_\_\_

50+ \_\_\_\_\_

40+ \_\_\_\_\_

under 40 \_\_\_\_\_

T-shirt size (men's) S \_\_\_\_\_ M \_\_\_\_\_ L \_\_\_\_\_ XL \_\_\_\_\_

I intend to participate in the race. I affirm that I am in proper physical condition to participate in this race and in consideration of the acceptance of this entry hereby release sponsor officials and organizers of this race and the University of Maryland from all claims of injury or damage to person or property, including death, resulting from my running in this event.

Signature \_\_\_\_\_

I would like a souvenir T-shirt but I do not wish to enter the race.

Signature \_\_\_\_\_

Return this form BY JUNE 30, 1989, together with the entry/T-shirt fee of \$7.00 to:

C. BEEGLE  
USDA, ARS, Insect Pathology Lab  
Rm 214, Bldg 011A, BARC-W  
Beltsville, MD 20705